



MEMO™ STAPLE SYSTEM
Surgical Technique
Superelastic Nickel-Titanium (NiTi) Alloy



OrthoSolutions 
Group

Advancing Foot & Ankle Care

Memo™ Staple System

This surgical technique guide is intended as a reference for trained orthopaedic surgeons. It does not replace the full Instructions for Use (IFU), which contains material/allergen/biocompatibility information, indications, contraindications, warnings and precautions, sterilisation/processing instructions, an MRI safety statement and other information critical to safe and effective device usage.

Surgeons should consult the IFU before use. The IFU for Memo™ Staple System is available electronically at www.orthosol.com/eIFU or in paper form upon request by contacting regulatory@orthosol.com.

Key Design Features

OrthoSolutions® has designed the Memo™ Staple System with usability and convenience in mind. Benefits of using the products are:

- Memo™ Staple System implants does not need to be stored in a freezer.
- A wide choice of sizes enabling the Memo™ Staple System to be used in a variety of procedures.

Surgical Technique

Step One:

Prepare the surgical site by tightly opposing both involved bone fragments and temporarily providing fixation with a k-wire. (Figure 1)

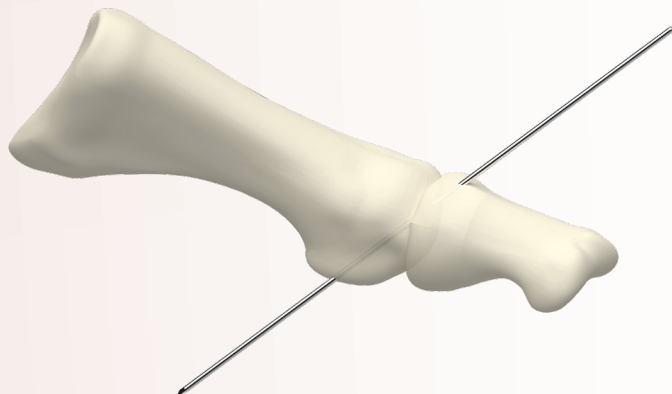


Figure 1

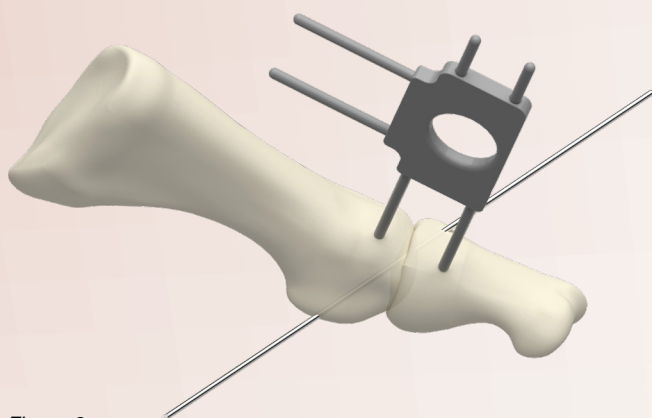


Figure 2

Step Two:

To determine optimal staple bridge width size, use the appropriate Memo™ Staple Template, (OS361004 - 10mm/12mm/16mm Memo™ Staple Template or, OS361006 - 20mm/25mm Memo™ Staple Template) ensuring that the appropriately sized legs capture both involved bone fragments. (Figure 2)

		Memo™ Staple bridge width				
		10mm	12mm	16mm	20mm	25mm
Instrument part number and description	Drill Bit	OS200022L – Drill Bit 2.2mm x 123mm	OS200025L – Drill Bit 2.5mm x 143mm	OS200025L – Drill Bit 2.5mm x 143mm	OS200025L – Drill Bit 2.5mm x 143mm	OS200027L – Drill Bit 2.7mm x 123mm
	Compression Staple Drill Guide	OS310911 – Compression Staple Drill Guide	OS310907 – Compression Staple Drill Guide 2.7mm	OS310907 – Compression Staple Drill Guide 2.7mm	OS310907 – Compression Staple Drill Guide 2.7mm	OS310907 – Compression Staple Drill Guide 2.7mm

Table 1

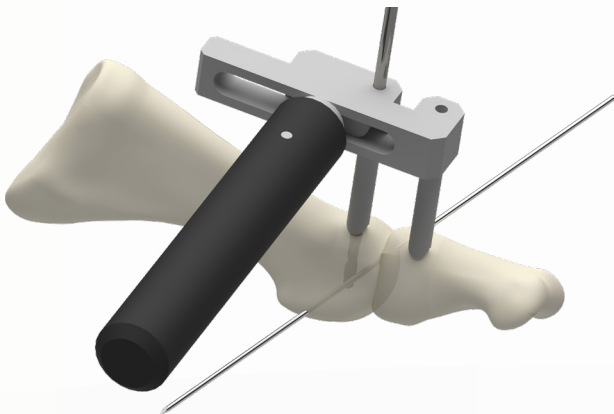


Figure 3

Step Three:

Set the Compression Staple Drill Guide to 1mm above the predetermined Memo™ Staple bridge width. Holding the appropriate Compression Staple Drill Guide against the fusion site, insert the appropriate drill bit through the Compression Staple Drill Guide, and drill the first staple leg pilot hole. (Figure 3)

Step Four:

Remove the drill bit from the appropriate Compression Staple Drill Guide and insert the Memo™ Staple Long Post – 2.4mm x 75mm (OS362526) through the Compression Staple Drill Guide into the pilot hole in the bone. This will assist the Compression Staple Drill Guide retains accurate position. Insert the drill bit into the second Compression Staple Drill Guide hole and drill the second staple leg pilot hole. (Figure 4)

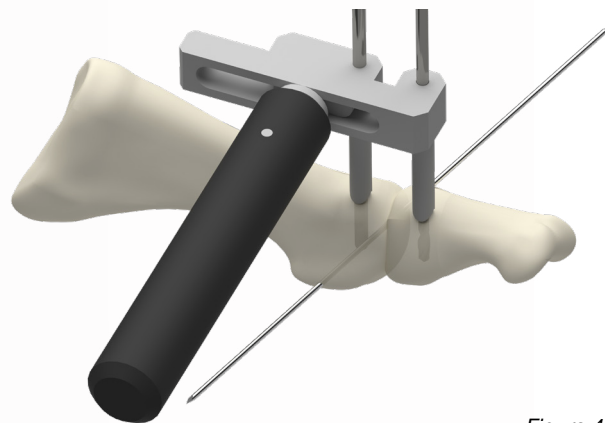


Figure 4

Step Five:

Remove the appropriate drill bit, Compression Staple Drill Guide and Memo™ Staple Long Post. Use the Compression Staple Depth Gauge (OS310912) to indicate the staple leg length(s) required. (Figure 5)

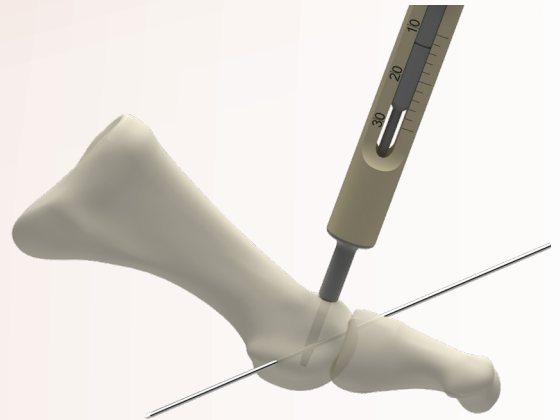


Figure 5



Figure 6

Step Six:

Attach the appropriate Memo™ Staple Expander (OS361007 – Memo™ Staple 10mm/12mm Expander or, OS361008 – Memo™ Staple 16mm/20mm/25mm Expander) onto the Memo™ Staple Universal Spreader (OS361009).

Load the appropriate Memo™ Staple size on the Memo™ Staple Universal Spreader by:

- Insert the desired Memo™ Staple into the Memo™ Staple Expander, ensuring that it is securely sitting in the jaws of the expander.
- Place a thumb on the Memo™ Staple to keep it in position.
- Apply pressure to the Memo™ Staple Universal Spreader handles to expand the Memo™ Staple legs to a parallel position.

This pressure will open the Memo™ Staple ready for insertion. (Figure 6)

Step Seven:

Insert the Memo™ Staple legs into the prepared pilot holes, then remove the Memo™ Staple Universal Spreader construct. (Figure 7a) If necessary, use the Compression Staple Impactor (OS310908) to ensure the Memo™ Staple is fully inserted and seated against the bone. (Figure 7b)

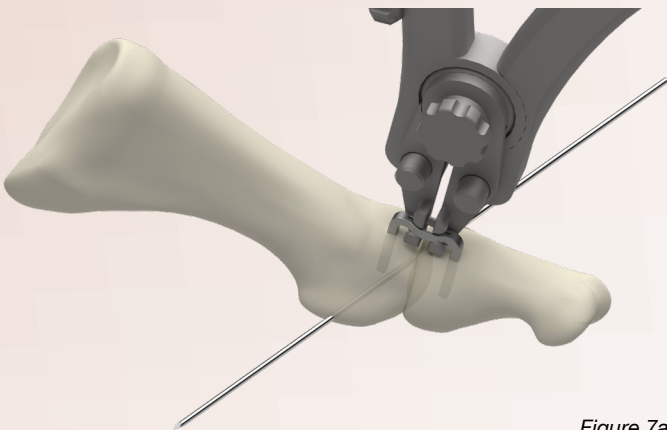


Figure 7a

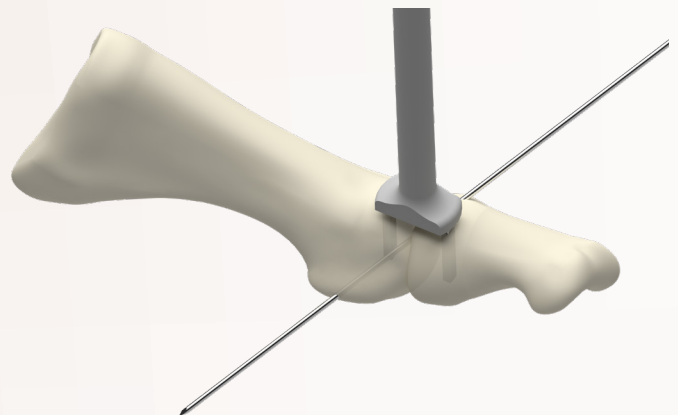
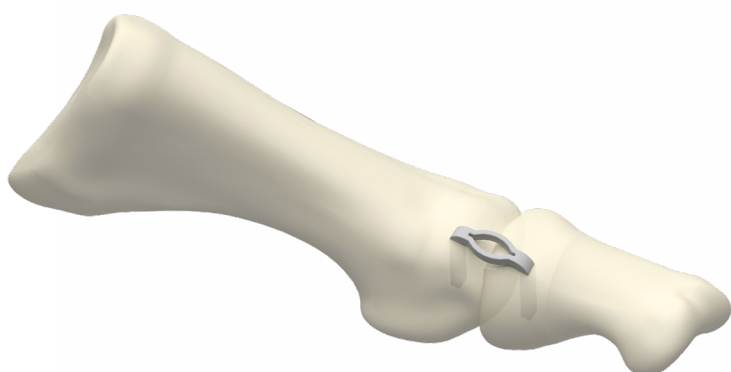


Figure 7b



Step Eight:

Remove the initial K wire used to provide temporary fixation, (Figure 8) and if preferred, check the position of the Memo™ Staple using fluoroscopy.

Figure 8

Explant of the Memo™ Staple implant:

If the removal of the Memo™ Staple is required – please use generic instrumentation (eg. an osteotome, 10mm or smaller) to lift the staple bridge away from the bone surface.

Memo™ Staple System Instrument Listing

Product Code	Description
OS310907	COMPRESSION STAPLE DRILL GUIDE 2.7MM
OS310908	COMPRESSION STAPLE IMPACTOR
OS310911	COMPRESSION STAPLE DRILL GUIDE
OS310912	COMPRESSION STAPLE DEPTH GAUGE
OS361000	MEMO STAPLE SYSTEM STERILISATION TRAY
OS361004	MEMO STAPLE 10MM/12MM/16MM TEMPLATE
OS361006	MEMO STAPLE 20MM/25MM TEMPLATE
OS361007	MEMO STAPLE 10MM & 12MM EXPANDER
OS361008	MEMO STAPLE 20MM & 25MM & 16MM EXPANDER
OS361009	MEMO STAPLE UNIVERSAL SPREADER
OS362526	MEMO STAPLE LONG POST 2.4MM X 75MM

Table 2

OrthoSolutions

Group

Advancing Foot & Ankle Care



OrthoSolutions UK Limited,
West Station Business Park,
Spital Road, Maldon, Essex.
CM9 6FF, United Kingdom

Tel: +44 (0)1621 843 599
Email: sales@orthosol.com

Ortho Solutions Inc 209
10th Avenue South Suite 416,
Nashville,
TN 37203

Tel: +1 (615) 899 3668
Email: us.sales@orthosol.com

Ortho Solutions Pty - Australia
PO Box 1330,
Milton,
QLD. 4064, Australia

Tel: +61 (0)408 846821
Email: salespty@orthosol.com

Rx only

Caution: Federal Law (USA)
restricts this device to sale by
or on the order of a physician

www.orthosolutions.com

OS TD 00077_26 Rev 01
Effective Date: Mar 2026

© 2025 Ortho Solutions UK Ltd. Ortho Solutions and
the OS logo are trade marks of Ortho Solutions UK Ltd.

Scan here to know more



Consult
instructions
for use



2797²



Surgeon must be
fully trained in the
surgical technique

² CE marking and the notified body number is applied per part number
and appears on the device packaging, or the device if applicable.